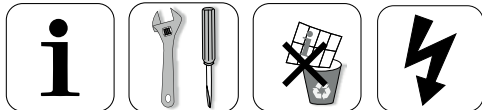


ESBE

SERIES CRA, CRB, CRC, CRD, CRS



Series CRA110, CRA140, CRA150
 Series CRB100
 Series CRC110, CRC140
 Series CRD100
 Series CRS130

LVD 2014/35/EU
 EMC 2014/30/EU
 RoHS 2011/65/EU
 RED 2014/53/EU
 EN 300220-2

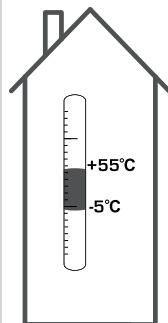
CE



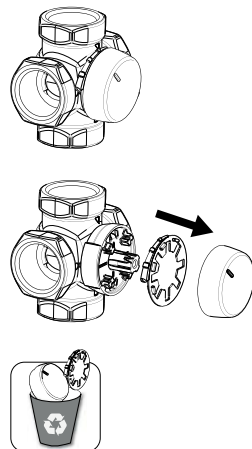
DECLARATION OF CONFORMITY
<http://www.esbe.eu/global/en/support/download-documents> (Certificates)



i



1

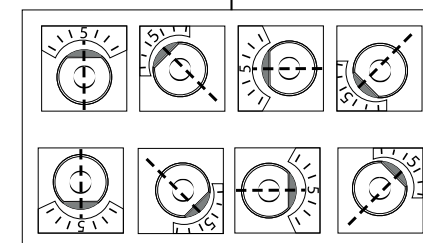
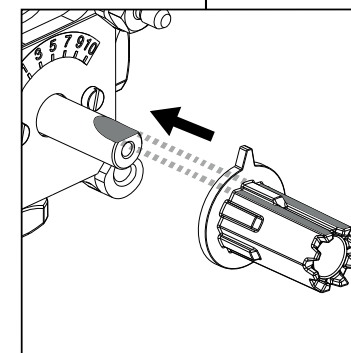
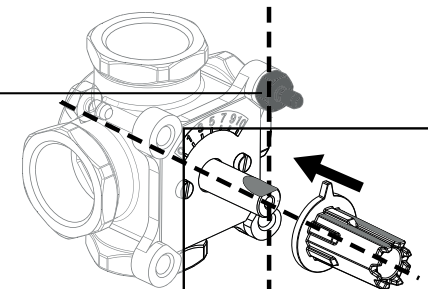


3



MG, G, F, H, HG, BIV, T, TM

	DN15-25	
	DN20-40	
	DN50	
	DN20-25	
	DN32-50	
	H: DN25	
	H: DN32-50	
	HG: DN25	
	DN20-22	
	DN25	
	T: DN20-32	
	TM: DN20	



i



CRA110, CRA140, CRA150
 CRB100
 CRC110, CRC140
 CRD100
 CRS130



VRG, VRB, VRH

3MG, 4MG



3G, 4G

3F, 4F ≤ DN50

3HG, 4HG, 3H, 4H

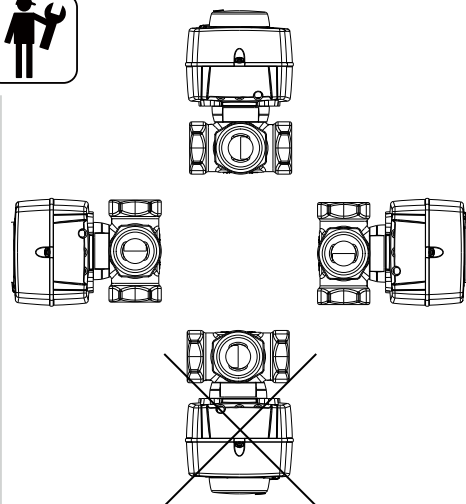


BIV

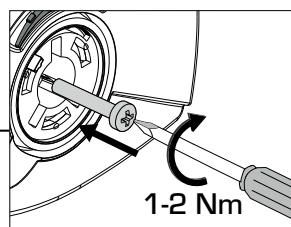
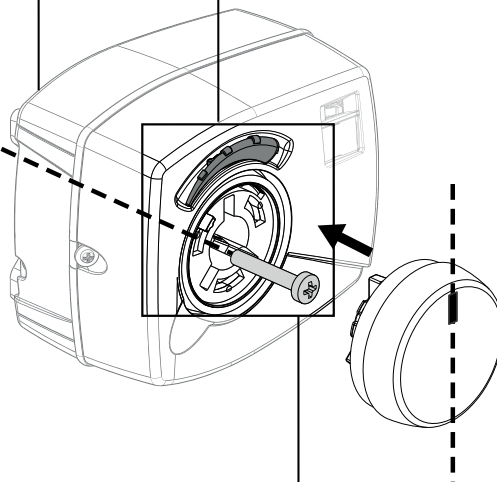
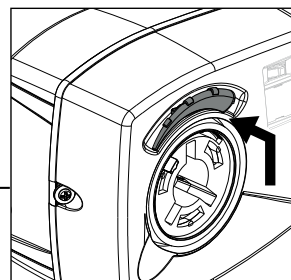
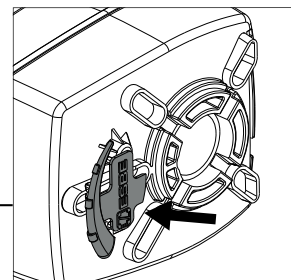
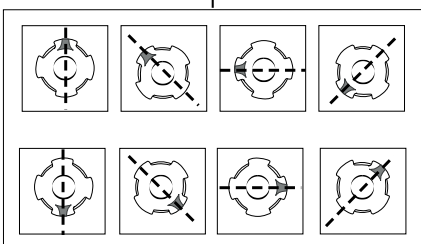
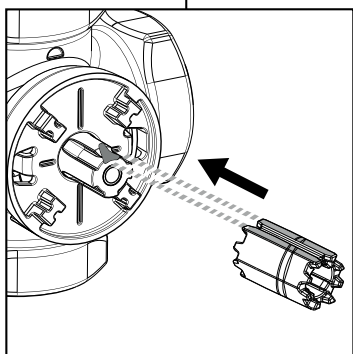
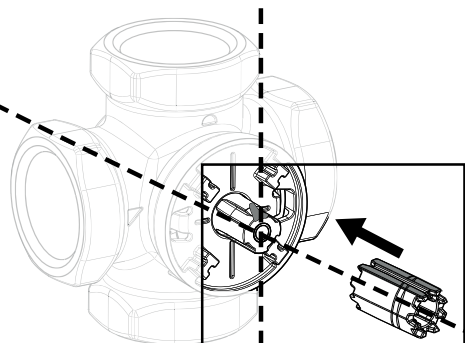


T, TM

2



**VRG130, VRG140,
VRG230, VRG330
VRB140, VRH130**



Mtrl.nr. 98140403 • Ritn.nr. 8308 utg. E • Rev. 1710



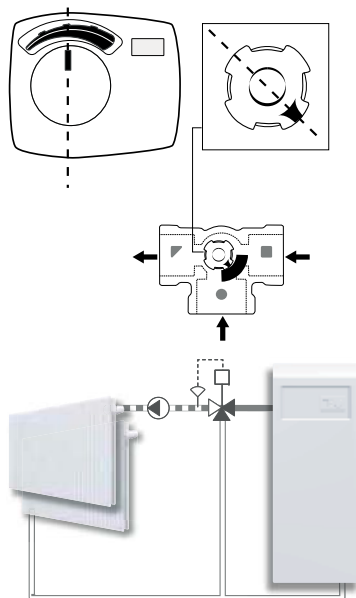
SERIES
CRA110, CRA140, CRA150, CRB100,
CRC110, CRC140, CRD100, CRS130



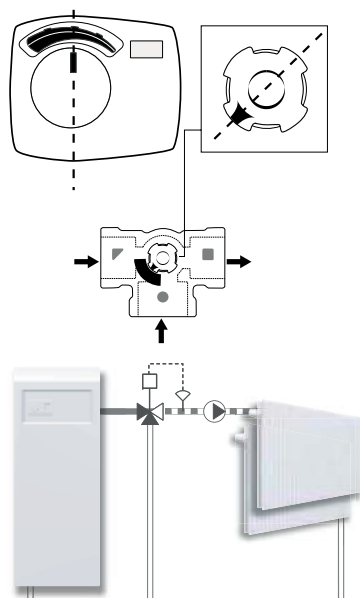
NO.1 IN HYDRONIC SYSTEM CONTROL

SERIES VRG130

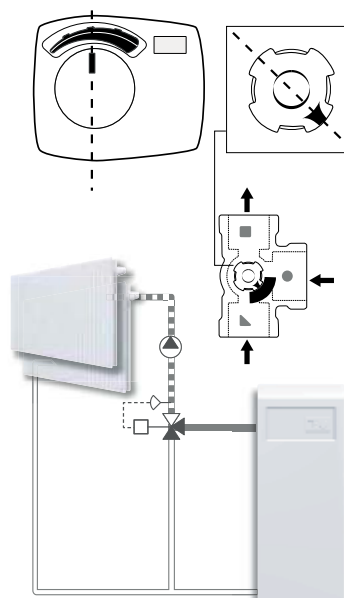
a



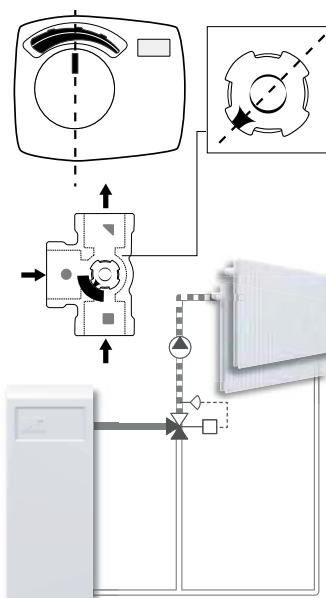
b



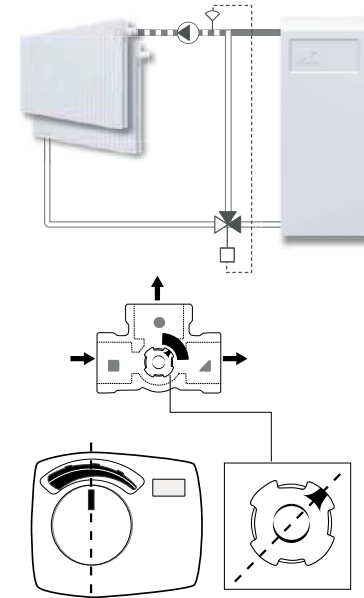
c



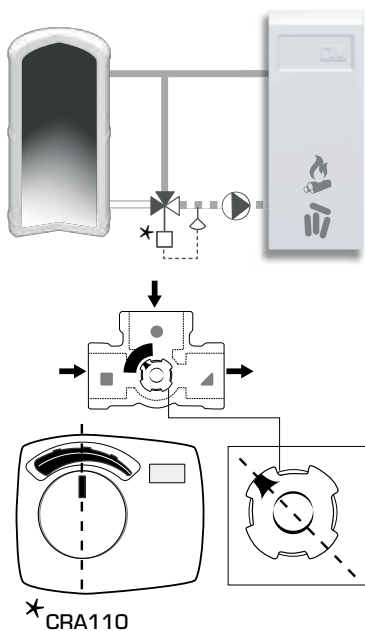
d



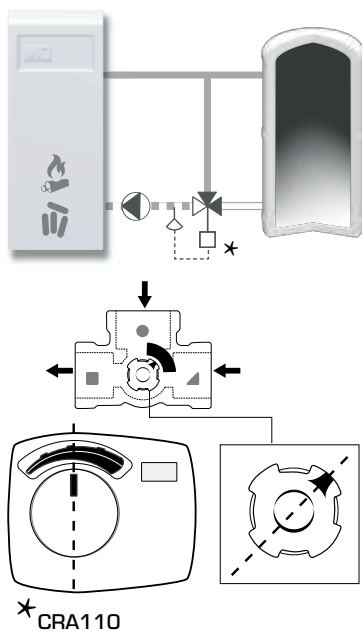
e



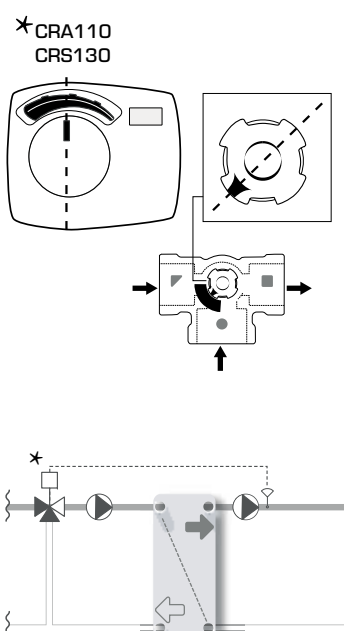
k



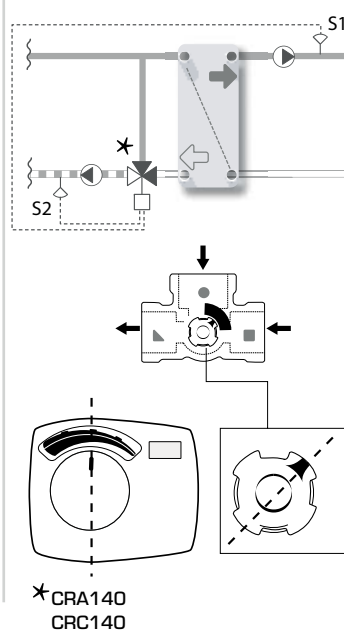
l



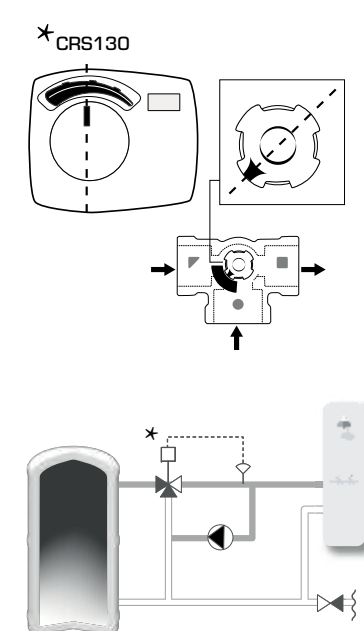
m



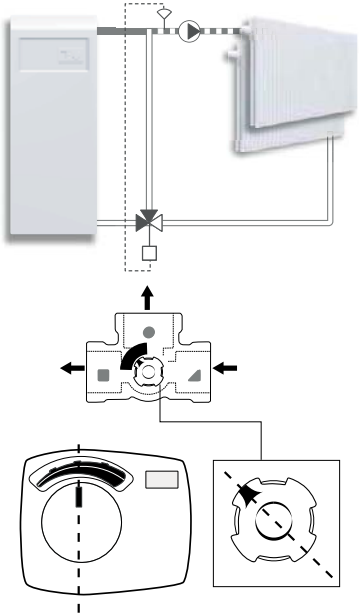
n



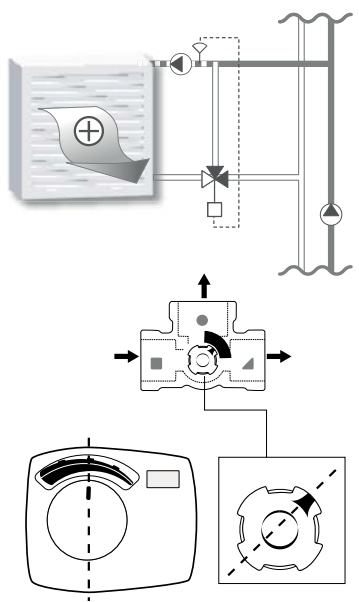
o



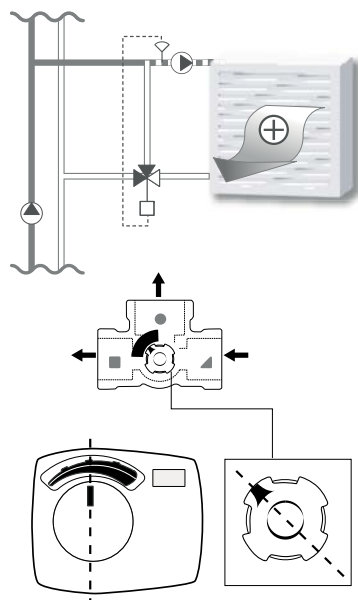
f



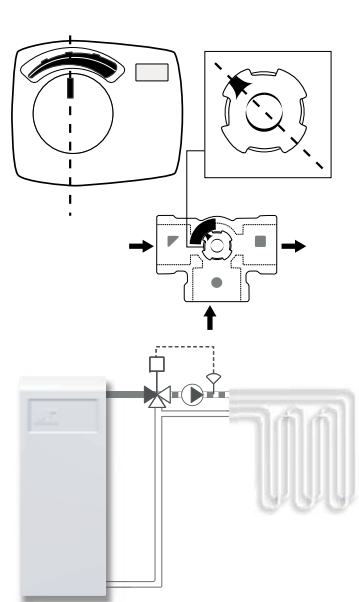
g



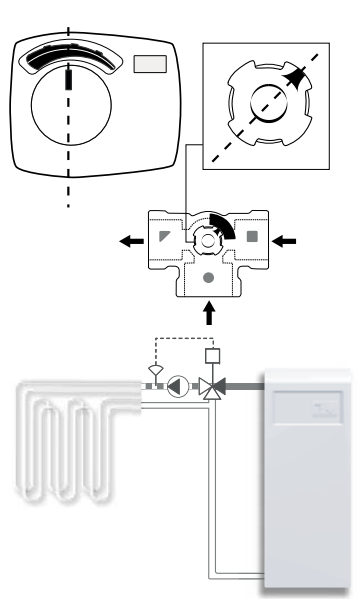
h



i

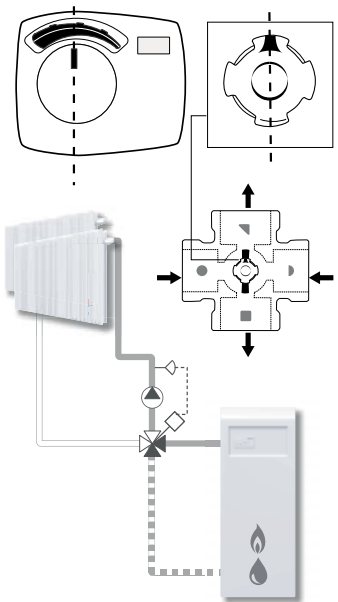


j

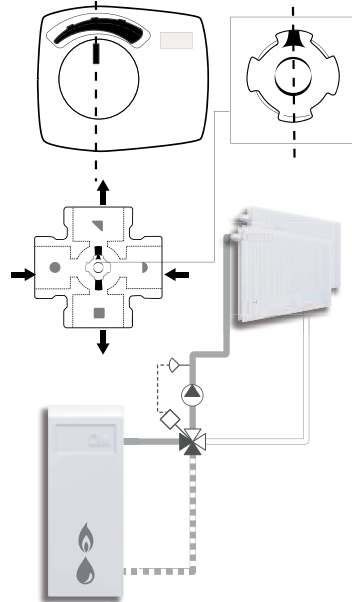


SERIES VRG140

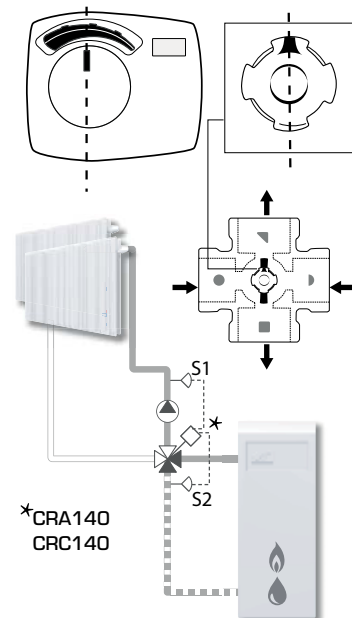
a



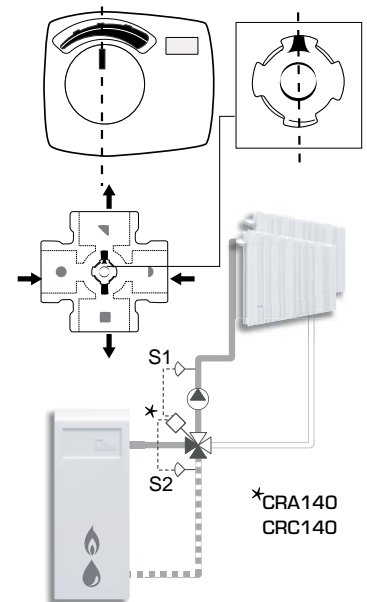
b



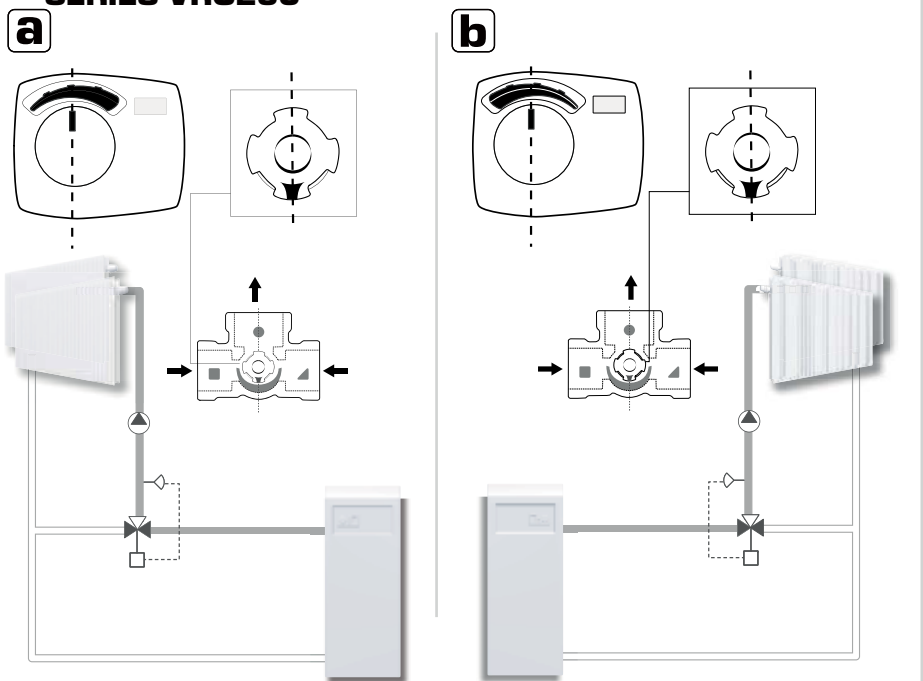
c



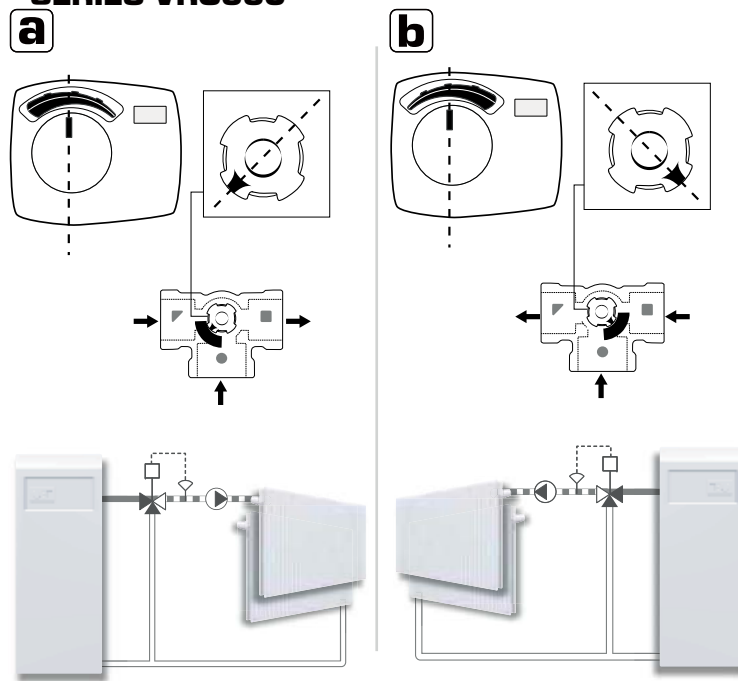
d



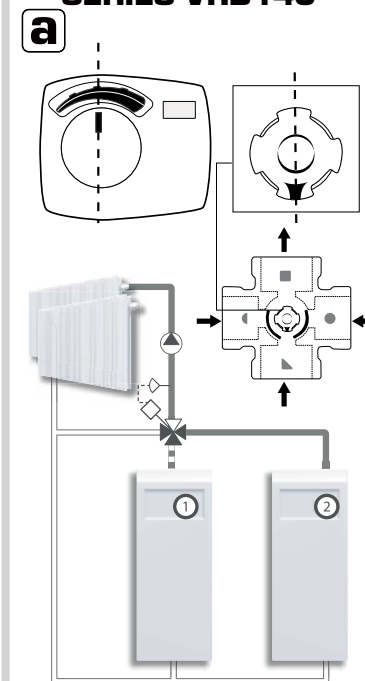
SERIES VRG230



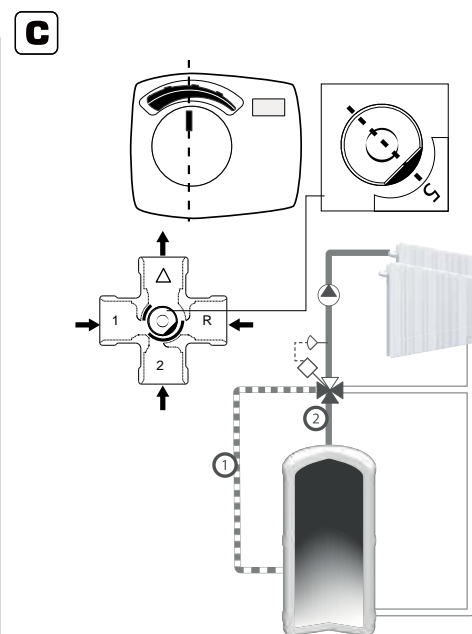
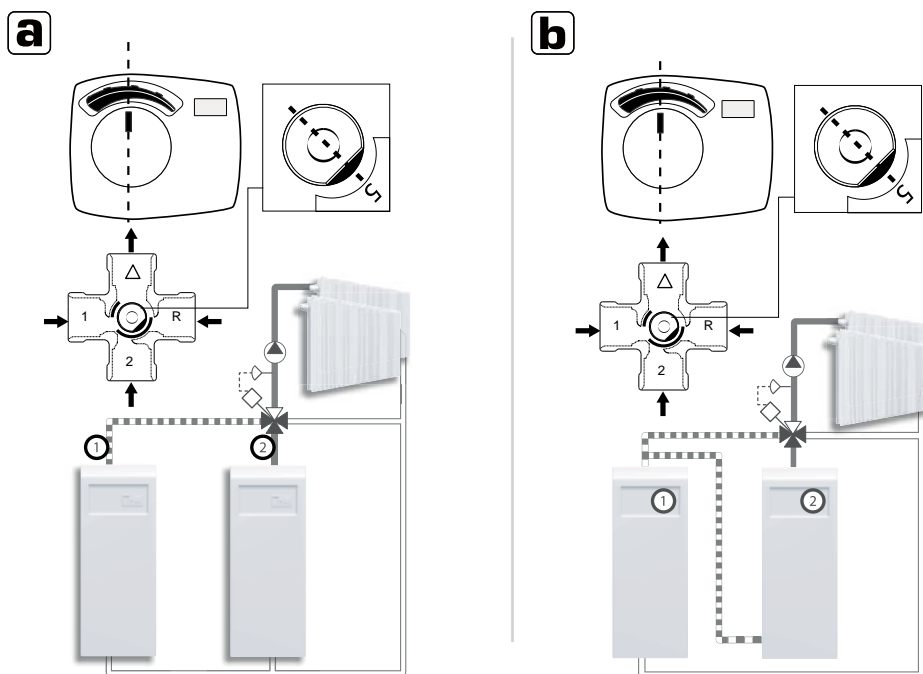
SERIES VRG330



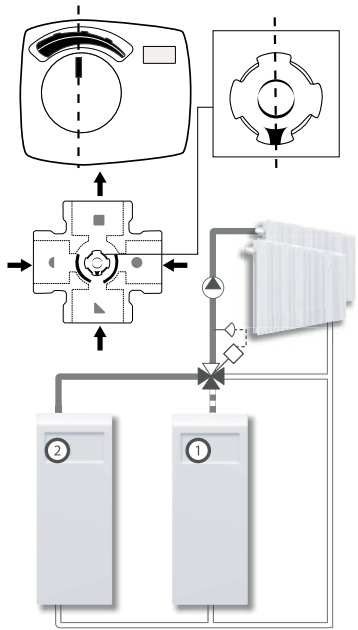
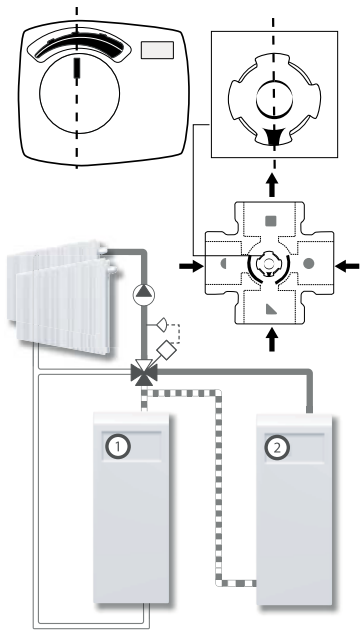
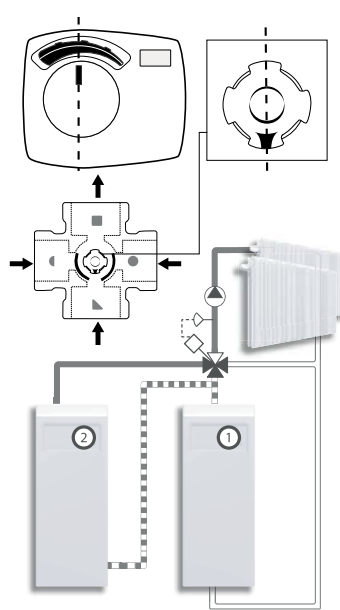
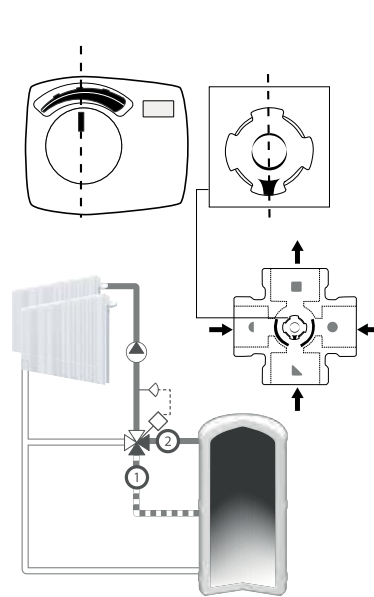
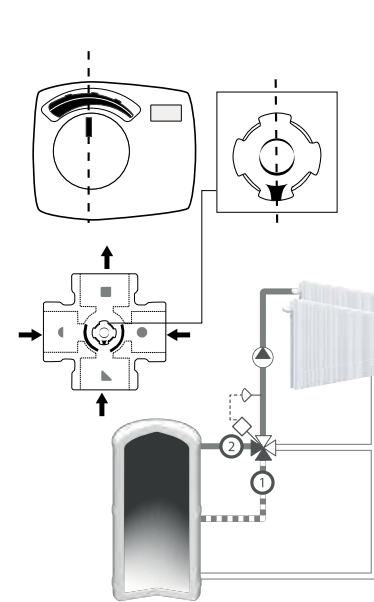
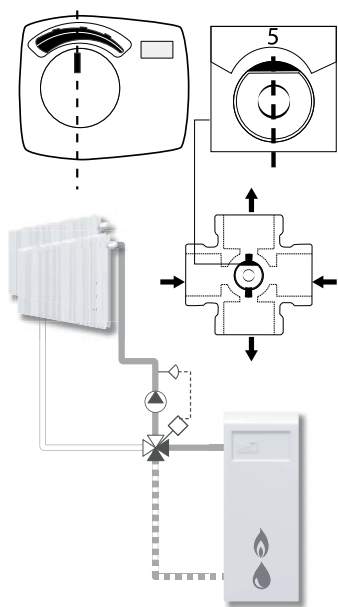
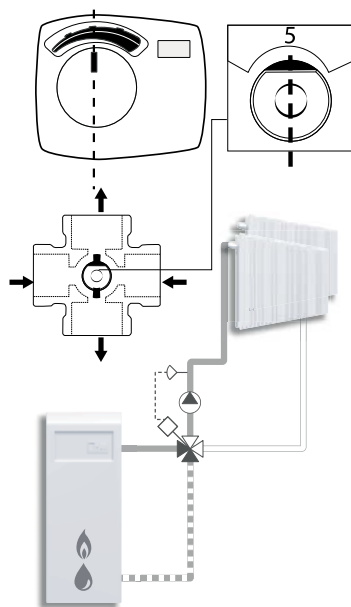
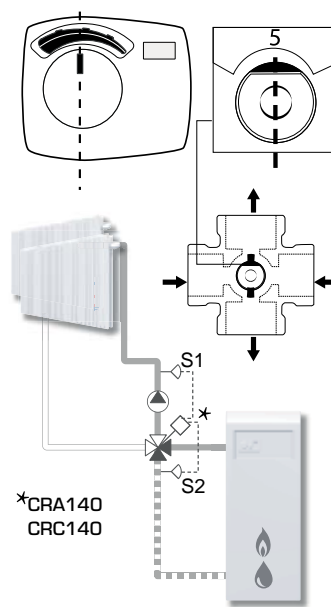
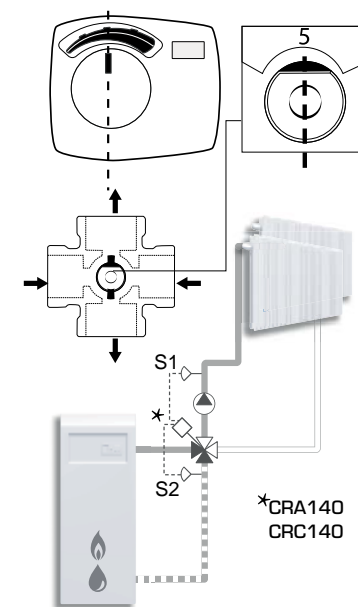
SERIES VRB140



SERIES BIV

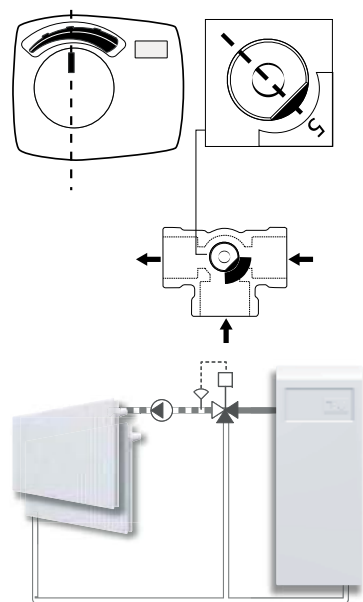


*We would like to point out to the existence of a German patent DE 1 992 135 G05 affecting the usage of bivalent 4-way valves in liquid circulation heating systems. In this patent the use of a 4-way bivalent valve as a type of heating system is protected in which 2 different heating circuits are operated in parallel, where the return of the first circuit is utilized as heat source for the parallel second heat circuit. A typical application would be a primary heat circuit with a heat source and a parallel floor heating, where the floor heating in a regulated manner is heated through its heat source and the return from the primary heat circuit is utilized as alternative secondary heat source for the floor heating. Such a utilization of our bivalent 4-way valve without approval of the patent holder is forbidden. All other applications our product group VRB are without restrictions possible.

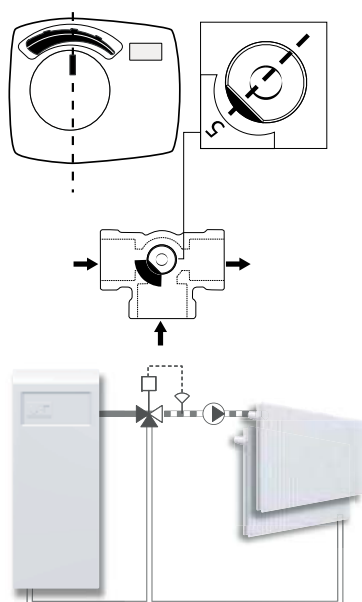
b**c****d****e****f****SERIES VRB140****SERIES 4F, 4MG, 4G****a****b****c***CRA140
CRC140**d***CRA140
CRC140

SERIES 3F, 3MG, 3G

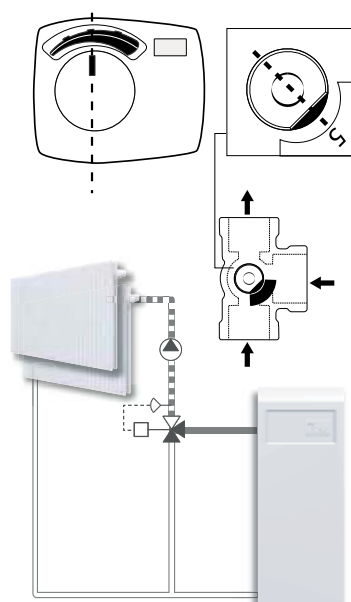
a



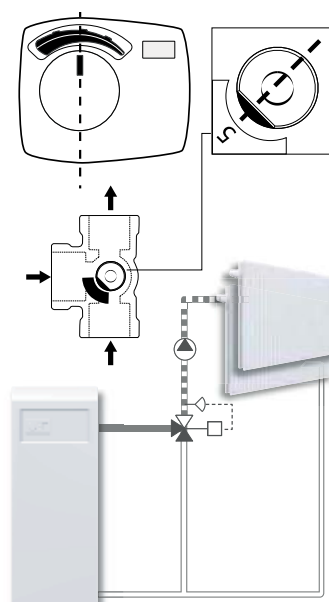
b



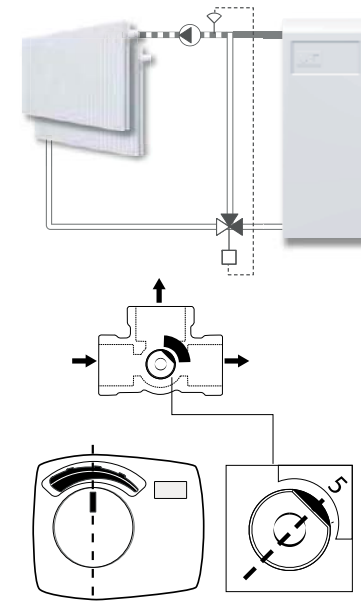
c



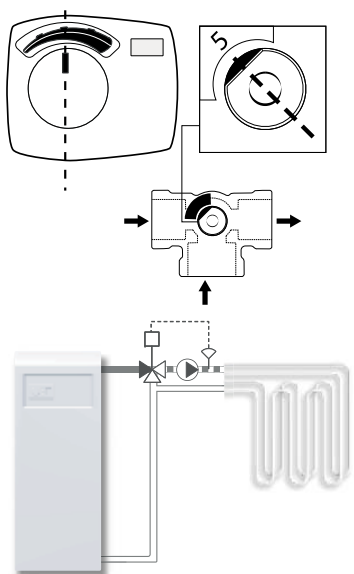
d



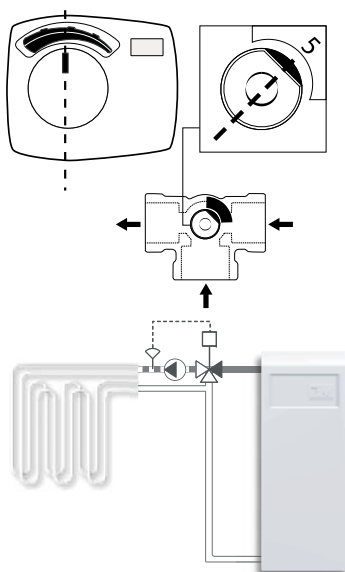
e



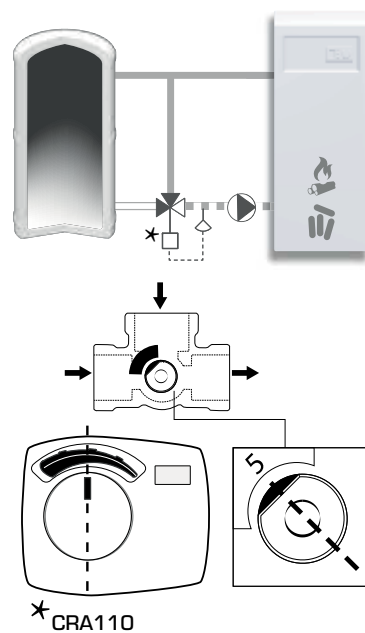
k



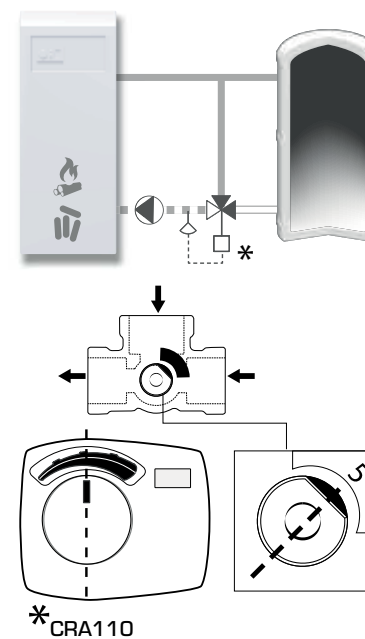
l



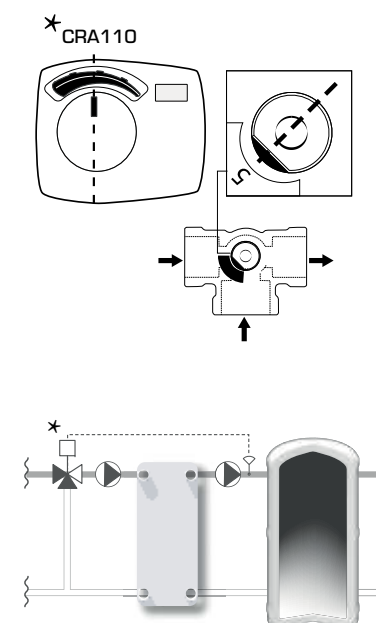
m



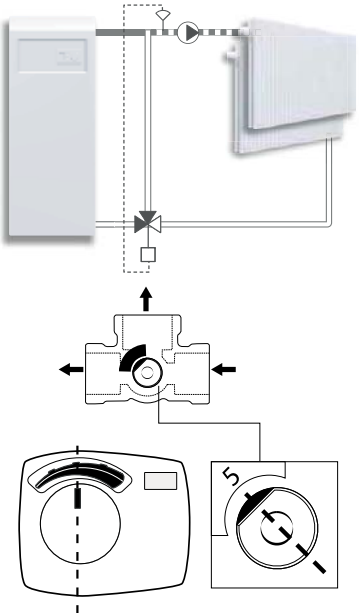
n



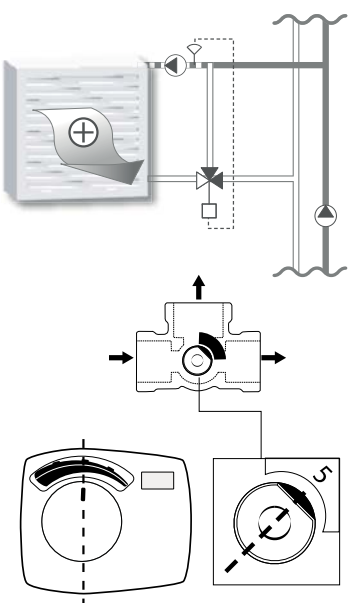
o



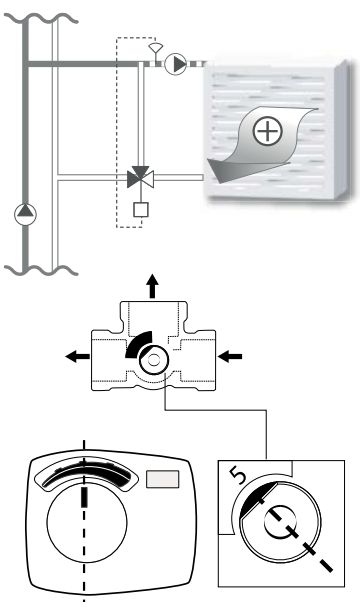
f



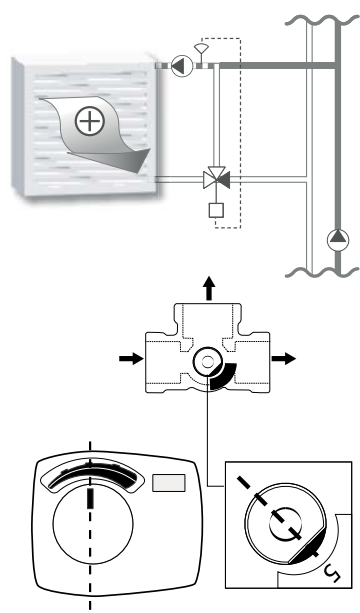
g



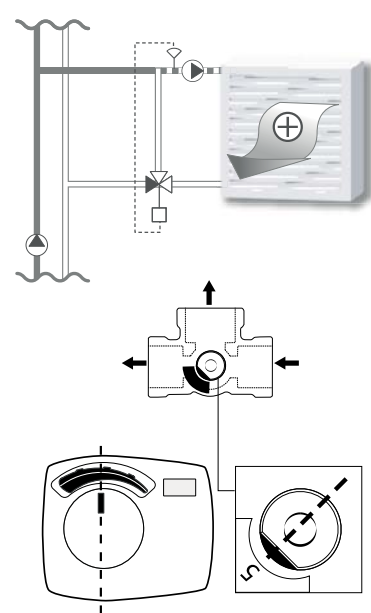
h



i

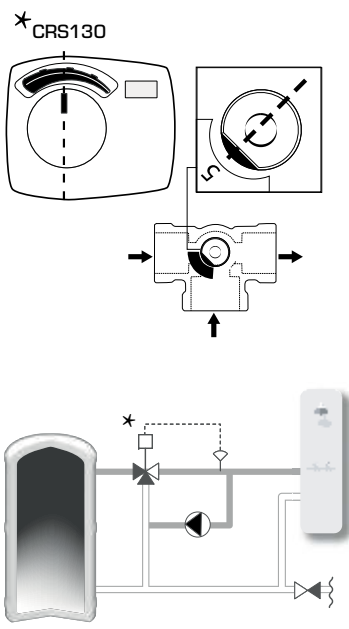


j



SERIES 3F, 3MG, 3G

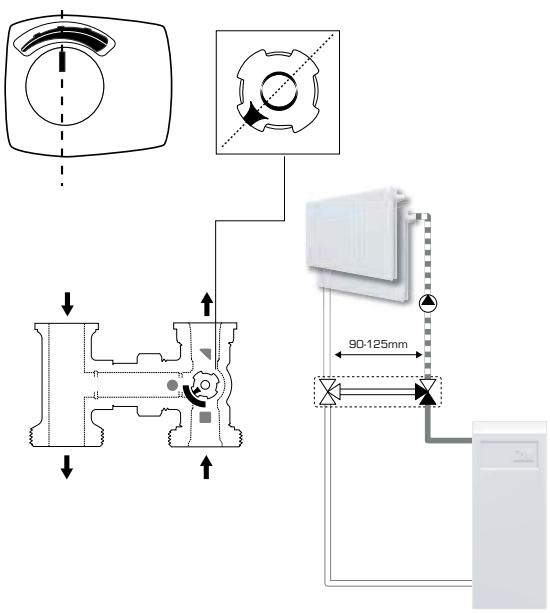
p



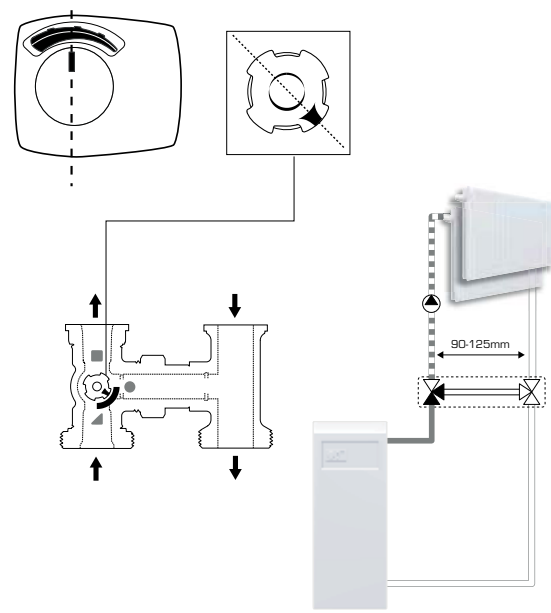
SERIES 3F, 3MG, 3G

SERIES VRH130

a



b



i

