

COMPLEMENTARY PRODUCTS

# VACUUM VALVE

## SERIES VVA100



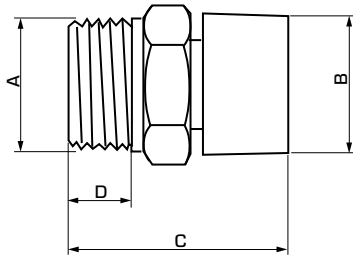
ESBE vacuum valves are intended as anti-siphonage devices.

### OPERATION

ESBE's vacuum valve is intended as an anti-siphonage device for e.g. hot water tanks.

### MEDIA

Maximum 50% glycol for freezing protection and oxygen absorbing compounds are allowed as additives.



### TECHNICAL DATA

Pressure class: \_\_\_\_\_ PN 10  
 Max. working temperature: \_\_\_\_\_ 90°C  
 Connection: \_\_\_\_\_ External thread (G), ISO 228/1

Material

Body: \_\_\_\_\_ Dezincification resistant brass, DZR\*

Plug: \_\_\_\_\_ Plastic

Spring: \_\_\_\_\_ Stainless steel

O-ring: \_\_\_\_\_ EPDM

\* Suitable for drinking water applications

PED 2014/68/EU, article 4.3

### SERIES VVA100

Art. No.	Reference	DN	Connection A	B	C	D	Weight [kg]
36100100	VVA102	15	G 1/2"	22.0	33.0	9.0	0.03