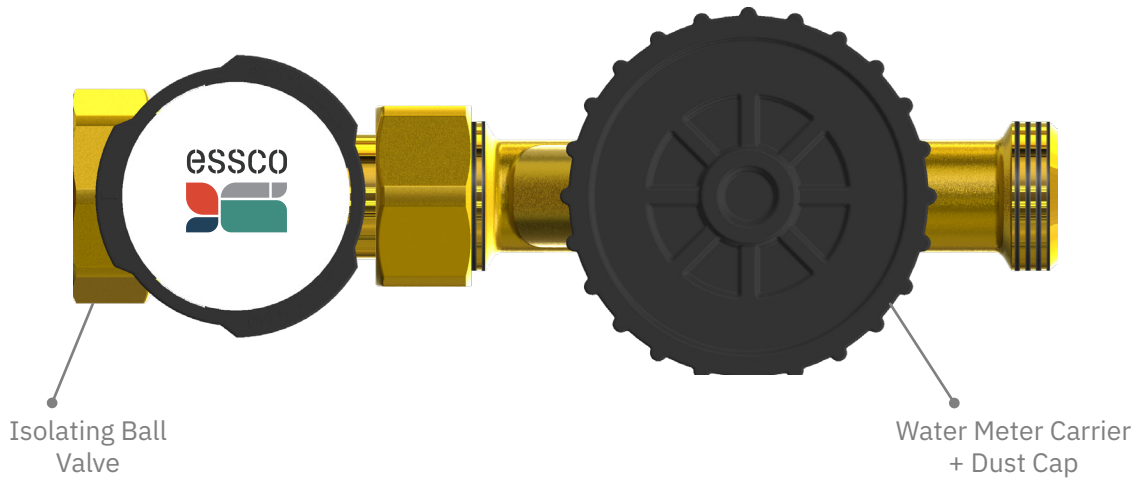




# Water Meter Compact Assembly (WMCA)

For the isolation and metering of cold-water supply



## Overview

The ESSCO WMCA provides isolation and metering of the cold-water supply to multi-dwelling buildings, such as apartments and office blocks.

Supplied with water meter carrier, the WMCA can be fitted with any approved water meter to match project specification.

Available in ¾" or 1" BSP female variants.

## Water regulations

Current Regulations stipulate the requirement for both Service Valves and Double Check Valves on each level of a multi-floor dwelling. Clause R15.24.1 requires precautions to be taken to prevent or limit back flow in supply pipes. Clause R15.24.3 recommends additional protection be installed at every floor. Assuming the backflow risk is Category 3 or below a DCV assembly can be installed downstream of the service valve. ESSCO's water meter assembly is fully compliant with current water regulations.

## Features and benefits

- Compact and space saving (fraction of the size of traditional branch valve assemblies)
- Uses the same components as the Essco WMA, which are approved under the Water Regulations Approval Scheme (WRAS)
- Easy to install, either horizontally or vertically
- Position of water meter can be adjusted to suit, making it easy to read the display
- Supplied pre-tested to save time on site
- Robust, with minimal service and maintenance requirements
- Supplied with carrier, ready to fit any approved water meter
- Dust cap on water meter carrier protects from contamination during installation\*

\* Please note this provides temporary protection only and must be removed and replaced with a meter before commissioning.

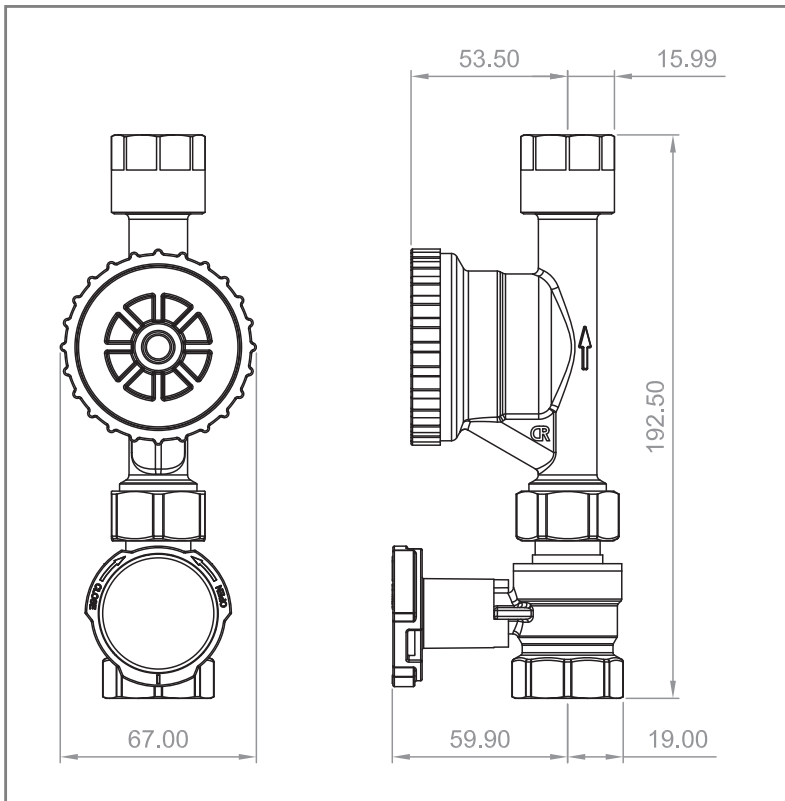
WMCA's are available from your chosen distributor, place an order today.

If you are a distributor, request a quotation by emailing [sales@esscogroup.co.uk](mailto:sales@esscogroup.co.uk) or call us on **01489 779068**.

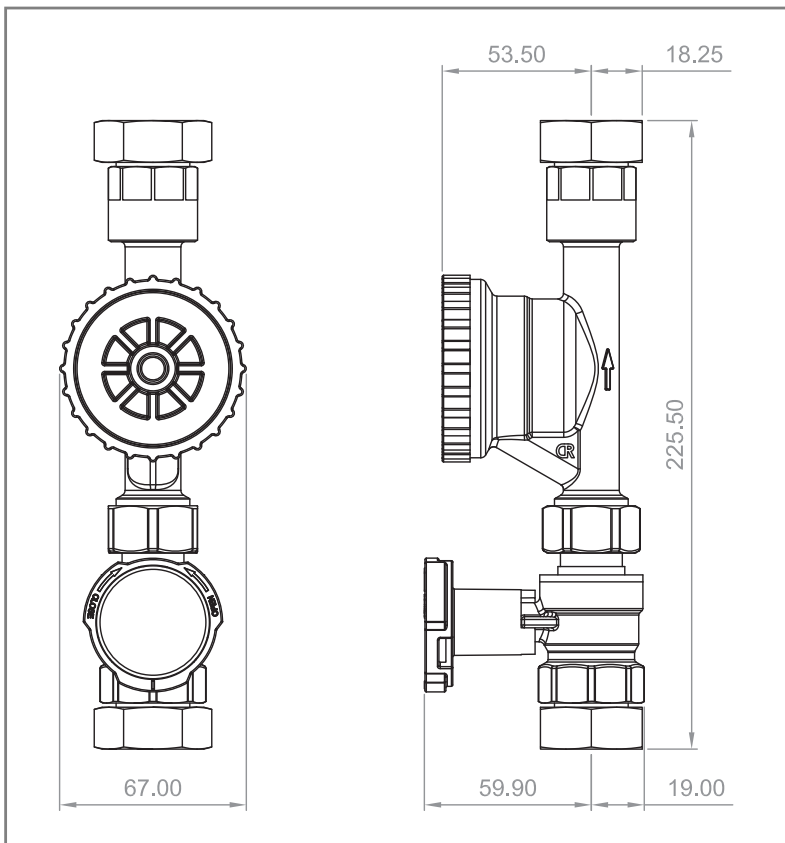


# Dimensions

## WMCA with 3/4"xF Connections



## WMCA with 1"xF Connections





# Technical Specification

Specification	
Medium	DCW / Potable water
Max. working pressure	PN16
Recommended velocity range for avoidance of noise	1 – 2 m/s
Working temperature range	5 – 85°C
Connections	¾" BSP or 1" BSP
Water meter carrier connection	DN40 internal thread (screwed)
Installation	Vertical or horizontal
Approvals	Components were WRAS approved as part of WMA*

\*(WRAS) Certificate No. 2110358 applies to sister product WMA



Water Meter Carrier  
(EVMMAA-001)

## Materials

Component	Material	Grade
Body	Brass	CW602N
O-rings + flat seals	Rubber	EPDM
Ball valve	Brass	CW617N
Ball valve seal	Plastic	PTFE
Ball valve stem	Brass	CW614N
Ball valve handle	Plastic	Nylon 60% glassfibre
Water Carrier Cap	Plastic	Technyl A

### Specification text

PN16 rated DZR Brass (CW602N) Water Meter Compact Assembly (WMCA), suitable for potable water applications with water temperatures from 5 to 85°C.

Assembly comprises isolating ball valve and 110mm water meter carrier to accommodate a Class D water meter.

### Product codes

**Standard WMCA with ¾" Connections:**  
EAWMCA-001 (¾")

**Standard WMCA with 1" Connections:**  
EAWMCA-002 (1")

## Typical WMCA Installation

